



## **Apple TV / iTunes Control Module Integration Guide for AMX Control Systems**

Version 0.9.1

## **Table of Contents**

<b>Overview</b> .....	<b>3</b>
<b>QuickStart</b> .....	<b>3</b>
Licensing your module.....	4
<b>Troubleshooting</b> .....	<b>5</b>
Cannot establish a connection with the Apple TV or iTunes.....	5

## Overview

This document describes how to integrate the Autonomic Controls Apple TV / iTunes control module into a AMX control system installation.

This module offers a ready-to-use solution for direct IP control of Apple TV devices, or iTunes running on a Mac or PC. The Apple control service allows the AMX Control System to interactively access your digital media player's functionality and will display feedback for those actions. You can browse your digital media collection, initiate playback, and manage the playback queue without having direct access to the device's on screen display.

## QuickStart

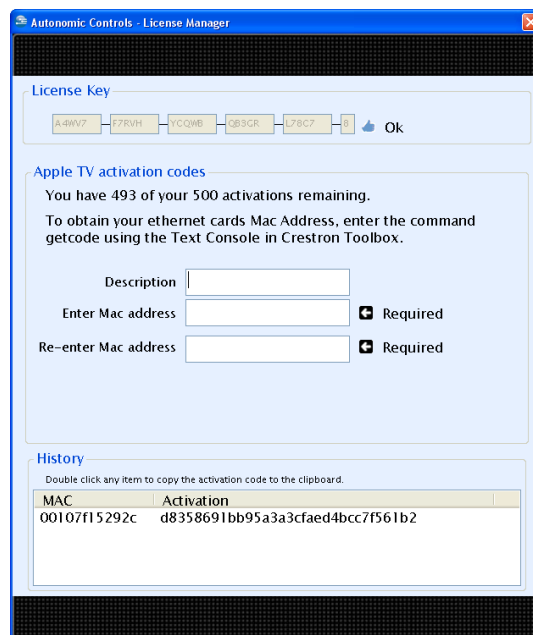
1. Download the AppleTV module archive and unzip it to a directory on your hard drive.
2. Use the Autonomic License Manager to generate an activation code.
  - a. Locate and run the Autonomic License Manager Install shortcut.
  - b. Run the Autonomic License Manager and paste your license key code.
  - c. Obtain the Processor Code of the target AMX Processor by running the sample program. Generate an activation code using the Processor Code displayed on the screen. (You can also obtain the Processor Code by enabling the debug parameter on the module, and noting the value for Unique ID: when the module is run).
3. Open the Autonomic Controls Apple TV Demo.apw in NetLinx Studio
  - a. Open the Autonomic Apple TV.axs file.
  - b. Set the value of the ATV\_ACTIVATION\_CODE (line 68) to the activation code generated in step #2.
  - c. Change the ATV1\_NAME parameter to a friendly name for the device you're controlling.
  - d. Change the ATV1\_IP\_ADDRESS parameter to the static IP address of your Apple TV or iTunes Computer.
  - e. Compile the program and upload it to the processor.
4. Open one of the sample TP-4 touch panel files.
  - a. Upload the file to your touchpanel.
5. Pair your Apple TV or iTunes Device. **Important: This module must pair itself with the Apple TV device or iTunes before it can be controlled. You must use the sample program to initially pair the module.**
  - a. The first time you run the module, you will be prompted to pair your device with the AMX processor.
  - b. Follow the onscreen directions on the touch panel to finish the installation.

## ***Licensing your module.***

The Autonomic Controls Apple TV module is licensed on a per-processor basis. You must obtain a license key for each processor that you want to install the module on, however, a single processor may control as many Apple TV devices or iTunes computers as you need.

When you purchased the Apple TV module, Autonomic Controls provided you with a license key code. This license key is used with the Autonomic Licensing Manager to generate an activation code for your specific processor.

To install the License Manager, double click the shortcut file called “Autonomic License Manager Install” in the sample program directory.



When generating activation codes, you must maintain a full time connection to the internet.

Paste or type your license key code into the License key field on the form.

Once your license key is validated, you will be able to type in a processor description, and the processor code of your processor.

## Troubleshooting

### ***Cannot establish a connection with the Apple TV or iTunes.***

- Double check the ATV1\_IP\_ADDRESS parameter in the Apple TV module to make sure it matches the device.
  - Make sure your device is using a Static IP address.
  - Check Licensing Status – make sure you have put the correct activation code in the module's Activation parameter. If you have changed processors, it will be necessary to generate another activation code.
-